



GAT MONTHLY MEMBERSHIP PROGRESS REPORT

Results as of: 4/30/2022

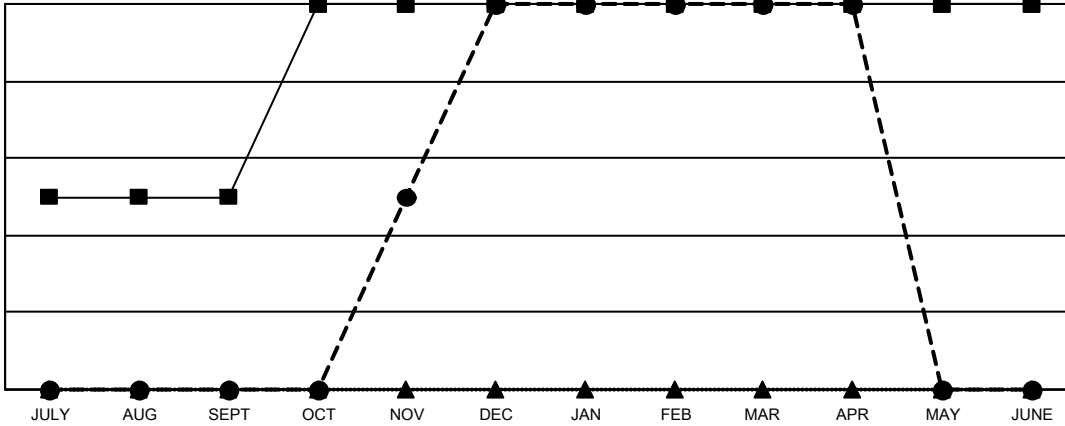
Multiple District 49

LOCATION: ALASKA

Clubs			
RESULTS FOR 2021-2022			
QUARTER	NEW CLUB GOAL	NEW CLUBS	DROPPED CLUBS
JULY/AUG/SEPT	1	0	2
OCT/NOV/DEC	1	2	0
JAN/FEB/MAR	0	0	0
APR/MAY/JUNE	0	0	0

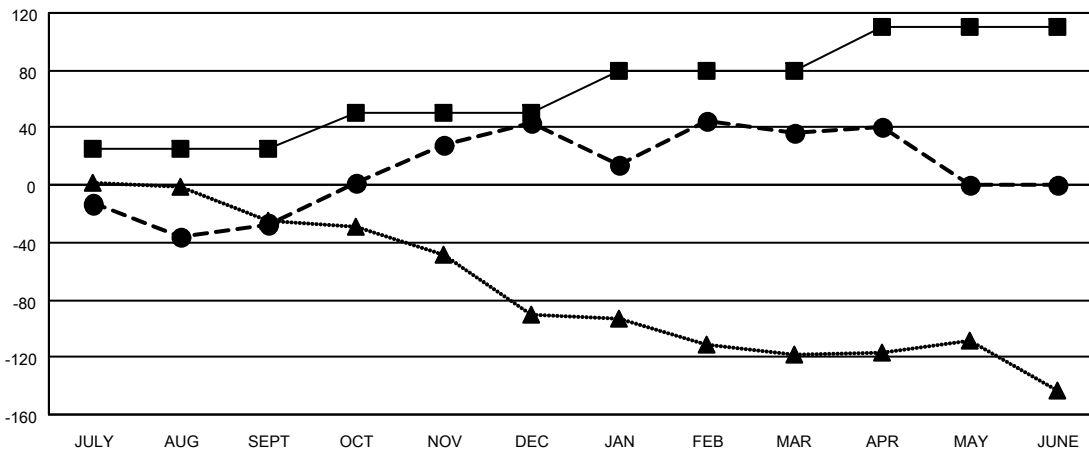
Members			
RESULTS FOR 2021-2022			
QUARTER	MEMBER GROWTH NET GOAL	MEMBER GROWTH ACTUAL	DROPPED MEMBERS ACTUAL (including transfers)
JULY/AUG/SEPT	25	74	83
OCT/NOV/DEC	25	115	40
JAN/FEB/MAR	30	126	115
APR/MAY/JUNE	30	53	48

GOALS AND ACTUAL NEW CLUBS CUMULATIVE



- CURRENT YEAR GOALS FOR NEW CLUBS
- CURRENT YEAR ACTUAL NEW CLUBS
- ▲- LAST YEAR ACTUAL NEW CLUBS

GOALS AND ACTUAL MEMBERS CUMULATIVE



- MEMBER GROWTH NET GOAL
- MEMBER GROWTH ACTUAL
- ▲- LAST YEAR MEMBERSHIP ACTUAL

DROPPED CLUBS: 2	
DROPPED MEMBERS	
DECEASED	18
CLUB CANCELLED	28
OTHER	240
TOTAL	286

36 CLUBS OF 61 ADDED 1 OR MORE NEW MEMBERS

[CLICK HERE FOR CUMULATIVE MEMBERSHIP DATA](#)

GENDER DISTRIBUTION	
MALE	1,099 (57.36%)
FEMALE	815 (42.54%)
NON BINARY	0 (0.00%)
PREFER NOT TO ANSWER	2 (0.10%)
TOTAL FAMILY UNIT MEMBERS	431
FAMILY MEMBERS PAYING HALF DUES	223